



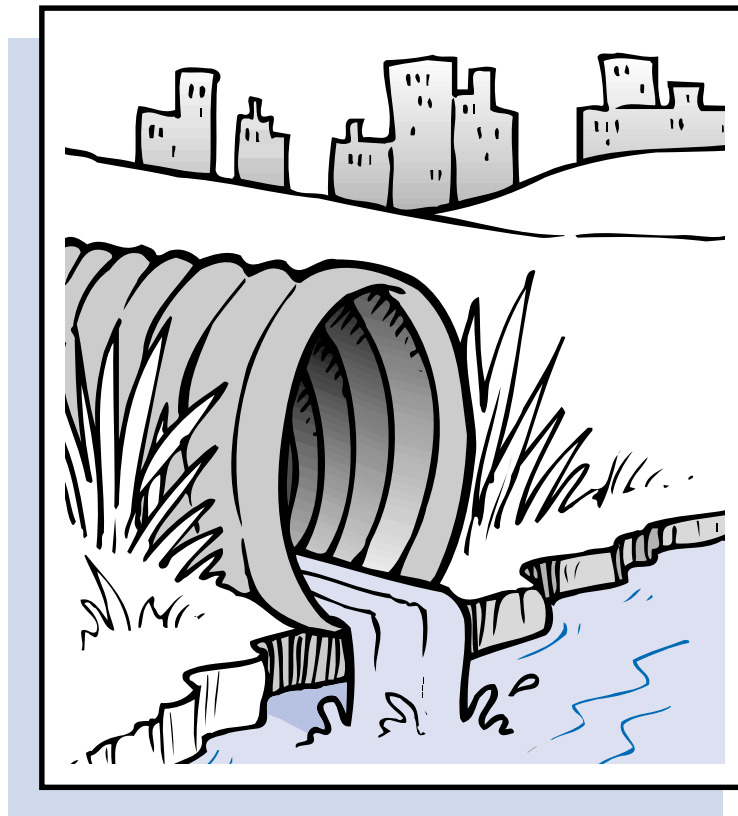
Cobb County Water System

Community Partners for Healthy Streams

SERIES #2:



SERIES #2: Maintaining Engineered Stormwater Controls



Community Partners for Healthy Streams is a cooperative effort
between the Cobb County Water System and local business community.

COMMUNITY PARTNERS FOR HEALTHY STREAMS

NOTE: This handbook is one in a series of handbooks that describe specific practices businesses can use to protect water quality. A complete list of all handbooks and fact sheets available through the Community Partners for Healthy Streams program is provided on the back cover. To obtain other handbooks in this series, contact the Cobb County Water System at the address or phone number provided below.

Becoming a “Community Partner for Healthy Streams”

We hope you'll join with the Cobb County Water System and other area businesses and institutions by participating in the Community Partners for Healthy Streams program. Through this program, businesses help protect local streams.

To participate in the program, fill out the checklist in the back of this handbook. Send it to the address below and our staff will work with you to become a Community Partner for Healthy Streams. In return for your effort, we'll publicly acknowledge your business through press releases, displays and speaking engagements. We'll also encourage consumers to look for the Community Partners logo at your business when they select services.

Community Partners for Healthy Streams Program Manager
Cobb County Water System
662 South Cobb Drive
Marietta, GA 30060

Phone: (770) 528-1482

Fax: (770) 528-1483

www.cobbstreams.org

Handbook Design and Illustration by David Zinn

This program is modeled on the Community Partners for Clean Streams program created through a US EPA Clean Water Act Grant by the Office of Washtenaw County Drain Commissioner Janis A. Bobrin, Washtenaw County, Michigan.

Directions for Completing the Water Quality Assessment Checklist Questions at the End of this Booklet

- Please Read Carefully -

1. For each question, check the appropriate answer box in the Assessment column (*Always*, *Needs Improvement*, or *Not Applicable*).
2. Next, check the corresponding box in the Action Plan column (*Plan to Continue* or *Plan to Improve*).
3. For every activity, indicate:
 - The **Responsible job or staff position(s)**. It is best to answer with a specific job position, i.e. facility manager.
 - **Schedule** or proposed date by which the activity will be completed.
 - **Action(s)** - please provide additional details regarding the implementation of a proposed activity, or explain what is already being done.
 - If the action requires ongoing employee training or commitment from management, check that box as a reminder to include it in your employee education activities.

(See example below)

THE SELF-ASSESSMENT IS NOT COMPLETE UNTIL THIS INFORMATION IS PROVIDED FOR EACH QUESTION.

4. Finally, remove completed checklist sheets from the handbook and return them to the Community Partners for Clean Streams Program. If you need help completing the Water Quality Assessment questions, please call the number listed below.

Community Partners for Healthy Streams
 Cobb County Water System
 662 South Cobb Drive
 Marietta, GA 30060
 Phone: (770) 528-1482 Fax: (770) 528-1483

SAMPLE CHECKLIST QUESTION:

<p>1. Steps are taken to minimize the amount of potentially polluting materials and wastes kept in storage.</p>	<p>ASSESSMENT</p> <p><input type="checkbox"/> Not applicable</p> <p><input type="checkbox"/> Always</p> <p><input checked="" type="checkbox"/> Needs Improvement</p>
	<p>ACTION PLAN</p> <p><input type="checkbox"/> Plan to continue</p> <p><input checked="" type="checkbox"/> Plan to improve</p>
<p>Responsible job or staff position(s): <u>Safety Manager</u></p>	
<p>Schedule: <u>Materials will be in place by 12/01</u></p>	
<p>Action(s): <u>Spill kits, absorbent pads, and spill response plans will be placed near all areas that have the potential for spills.</u></p>	
<p><input type="checkbox"/> Requires ongoing education/commitment</p>	

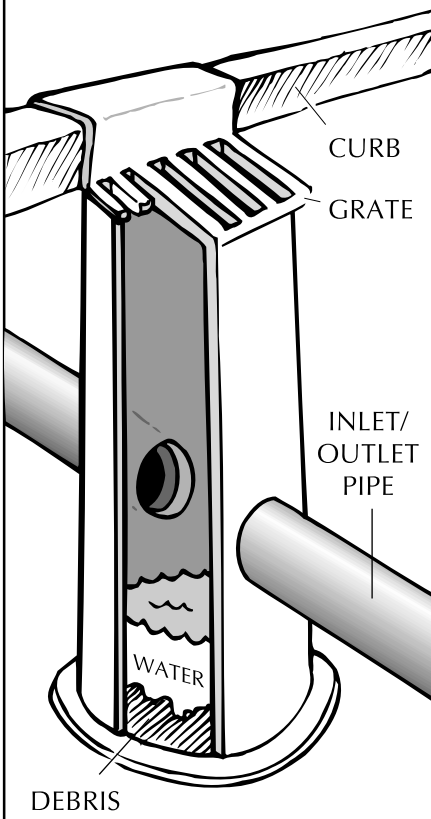


Catch Basin Care

Why be concerned?

Catch basins are structures located where surface water enters a storm drain or where pipes intersect. Their main function is to collect runoff and convey it into the stormwater management system. Many are also designed to let sediment and other debris settle into a storage area at the bottom of the catch basin. This helps prevent debris from flowing into the drainage system.

It's important to maintain catch basins. In addition to preventing storm sewer blockages, proper maintenance prevents accumulated pollutants from being stirred up during storms and washed through the system into rivers and streams.



Removing Debris from Storm Drain Grates

Storm drain grates can become clogged with litter or leaves, especially in the spring and fall. Regular inspection and removal of debris can help prevent blockages that can lead to localized flooding as well as downstream pollution.

The Importance of Regular Inspections

If you own or maintain a business site, inspect catch basins at least twice a year to see if they need cleaning. Regular inspection and cleaning prevents debris from accumulating in the outlet pipe, and reduces maintenance expense.

To find out how much material has accumulated in the storage area of your catch basin, insert a long, thin probe into the storm drain grate. Notice where the probe hits the debris and continue probing to the bottom to estimate how deep the accumulation is.

Cleaning Catch Basins

Catch basins should be cleaned out before the storage area is half full. Once this level is reached, solids begin to be washed out in rain storms. Cleaning should be done in the spring, after the first large rain event, in the fall after the trees have shed their leaves, and additionally if needed.

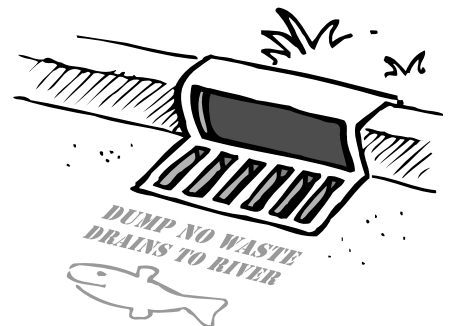
If the catch basin is shallow enough you may be able to clean it out yourself with a shovel and bucket. Be careful not to drop the basin's cover down the opening when you remove it — it can be extremely hard to retrieve. If you can't perform your catch basin maintenance, professional services are available.

Disposing of Excavated Material

Solids removed from catch basins may be high in pollutants such as oil, metals, chemicals, nutrients, and bacteria. To determine how to properly dispose of these solids, contact the waste disposal facility where you expect them to be taken. Hiring a professional service to maintain your catch basins can help to ensure that solid wastes are properly disposed.

Stenciling Your Storm Drains

Stenciled or decal messages applied with adhesive that read *Keep It Clean, Drains to Stream* are a good reminder that nothing but water belongs down a storm drain. Community Partners for Healthy Streams will lend stencils or provide decal resources for use by program participants.



GETTING HELP

Cobb County
Stormwater Management .. (770) 419-6435
Water Quality Section (770) 419-6441

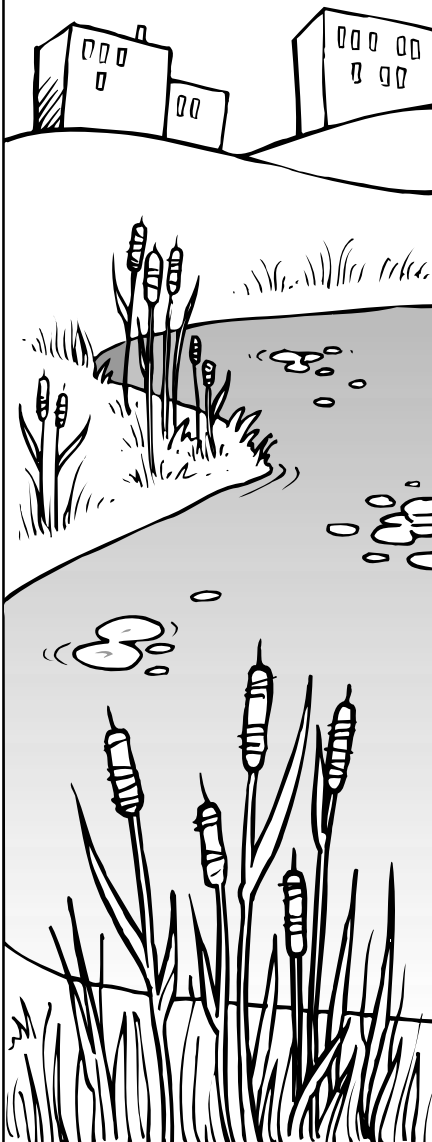
Community Partners for
Healthy Streams (770) 528-1482



Maintaining Stormwater Management Systems

Why be concerned?

The importance of maintaining stormwater management systems can't be overemphasized. No matter how well designed, without regular maintenance drainage systems will eventually stop functioning properly, losing their ability both to control flooding and to remove pollutants from stormwater.



Maintaining Your Detention System

Retention ponds are designed to store stormwater runoff without releasing it (except through evaporation, soil infiltration, or emergency bypass). **Detention** ponds are designed to store stormwater runoff and release it at a controlled rate to systems that ultimately lead to rivers and streams. In order to function properly, retention and detention systems must be rigorously maintained. Your system may have special maintenance requirements; however, in general:

- Maintain thick, native vegetation around ponds to slow and filter stormwater before it enters them. Avoid mown lawn to the water's edge.
- Regularly remove accumulated sediment and debris, especially around outflow control devices.
- Regularly check and clean inlet sedimentation basins to ensure that there's sufficient storage volume for proper function.
- Inspect the entire system at least once a year. If possible, inspections should be carried out by a professional engineer.
- Immediately repair or replace any damaged or defective structural components.

Herbicide-Free Algae Control

Herbicides and algicides used to control plant growth in ponds can pollute both retention ponds and waters downstream. Algae and aquatic plants can be controlled by limiting the input of nutrients (such as fertilizers, leaves and lawn clippings) and providing aeration.

Developing and Implementing a Maintenance Plan

A plan will help to expedite proper maintenance. Plans will vary, depending on the business and site; however every plan should contain the following:

1. A delineation of all stormwater management facilities (including maintenance access and vegetated buffer areas).
2. Provision for the routine and non-routine inspection of every component within the system. A professional engineer should be retained to inspect structural facilities and to conduct emergency inspections.
3. A list of the tasks required to maintain each component of the stormwater management system and a schedule for completing these tasks. This should include both preventative and corrective activities.
4. The party responsible for performing each of the maintenance activities described.
5. A description of on-going landscape maintenance needs, including soil erosion control.

For help determining how to maintain your system, call Cobb County Storm Water Management listed under "Getting Help."

GETTING HELP

Cobb County
Stormwater Management .. (770) 419-6435
Water Quality Section (770) 419-6441

Community Partners for
Healthy Streams (770) 528-1482

Community Partners for Healthy Streams WATER QUALITY ACTION PLAN

Series #2: Maintaining Engineered
Stormwater Controls - Fact Sheets 2.1 and 2.2

Completing Your Water Quality Assessment and Action Plan

Assessment and action planning requires respondents to assess their current activities and identify any specific actions needed to prevent pollution and improve water quality stewardship.

To create your own "Water Quality Action Plan," please fill out the following checklist. Directions are included on the other side of this page. The "Actions" in this checklist directly correspond to recommendations made within this handbook. If you have any questions or would like help completing this form, please contact the Community Partners for Healthy Streams Program Manager at (770) 528-1482. Send completed checklists to:

Community Partners for Healthy Streams
Cobb County Water System
662 South Cobb Drive
Marietta, GA 30060
Fax: (770) 528-1483

NOTE: To become a "Community Partner for Healthy Streams," all checklists that apply to your business must be completed and returned. A complete listing of all program handbooks/checklists is provided on the inside of the back cover. To obtain copies, contact the Community Partners Program Manager.

Business Information

Business name: _____
Type of Business: _____ No. of employees: _____
Address: _____
_____ Zip: _____
Contact person: _____
Title: _____ Phone: _____
Water Quality Action Plan prepared by: _____ Date: _____
e-mail: _____ Fax: _____

Business Activities That Can Affect Water Quality

Please check the activities that your business is responsible for:

- | | |
|--|--|
| <input type="checkbox"/> Storing materials | <input type="checkbox"/> Maintaining buildings/pavement |
| <input type="checkbox"/> Spill containment and response | <input type="checkbox"/> Maintaining constructed stormwater controls |
| <input type="checkbox"/> Site design and/or construction | <input type="checkbox"/> Maintaining landscapes |
| <input type="checkbox"/> Managing wastes | <input type="checkbox"/> Managing employees |

MAINTAINING ENGINEERED STORMWATER CONTROLS (FACT SHEETS 2.1 AND 2.2)

1. Leaves and other debris are regularly removed from storm drain grates.

ASSESSMENT

ACTION PLAN

- Not applicable
- Always Plan to continue
- Needs Improvement Plan to improve

Responsible job or staff position(s): _____

Schedule: _____

Action(s): _____

_____ Requires ongoing education/commitment

2. Catch basins are regularly maintained and wastes are disposed of at an approved site.

ASSESSMENT

ACTION PLAN

- Not applicable
- Always Plan to continue
- Needs Improvement Plan to improve

Responsible job or staff position(s): _____

Schedule: _____

Action(s): _____

_____ Requires ongoing education/commitment

3. Oil/water separators are regularly maintained and wastes are disposed of at an approved site.

ASSESSMENT

ACTION PLAN

- Not applicable
- Always Plan to continue
- Needs Improvement Plan to improve

Responsible job or staff position(s): _____

Schedule: _____

Action(s): _____

_____ Requires ongoing education/commitment

4. Detention and retention systems are regularly inspected and maintained (Attach a copy of stormwater system maintenance plan).

ASSESSMENT

ACTION PLAN

- Not applicable
- Always Plan to continue
- Needs Improvement Plan to improve

Responsible job or staff position(s): _____

Schedule: _____

Action(s): _____

_____ Requires ongoing education/commitment

Additional Comments: _____



Community Partners for Healthy Streams Fact Sheets



SERIES #1 - HOUSEKEEPING PRACTICES

- Fact Sheet 1.1 Storing Materials and Wastes
- Fact Sheet 1.2 Preventing and Cleaning Up Spills



SERIES #2 - MAINTAINING ENGINEERED STORMWATER CONTROLS

- Fact Sheet 2.1 Catch Basin Care
- Fact Sheet 2.2 Maintaining Stormwater Management Systems



SERIES #3 - MAINTAINING EQUIPMENT AND VEHICLES

- Fact Sheet 3.1 Storing and Maintaining Equipment and Vehicles
- Fact Sheet 3.2 Washing Equipment and Vehicles



SERIES #4 - MAINTAINING BUILDINGS AND PAVEMENT

- Fact Sheet 4.1 Outdoor Pressure Washing
- Fact Sheet 4.2 Maintaining Building Facades
- Fact Sheet 4.3 Maintaining Paved Areas
- Fact Sheet 4.4 Using and Storing Deicing Systems
- Fact Sheet 4.5 Cooling Water Systems



SERIES #5 - MAINTAINING LANDSCAPES

- Fact Sheet 5.1 Maintaining Healthy Lawns, Shrubs and Trees
- Fact Sheet 5.2 Using Fertilizer
- Fact Sheet 5.3 Integrated Pest Management
- Fact Sheet 5.4 Using Pesticides



SERIES #6 - SITE DESIGN AND CONSTRUCTION

- Fact Sheet 6.1 Designing Landscapes for Water Quality
- Fact Sheet 6.2 Designing Stormwater Management Systems
- Fact Sheet 6.3 Clearing and Grading Land



SERIES #7 - MANAGING WASTES

- Fact Sheet 7.1 Minimizing Waste
- Fact Sheet 7.2 Recycling
- Fact Sheet 7.3 Waste Disposal



SERIES #8 - EDUCATION

- Fact Sheet 8.1 Education and Community Leadership



Cobb County...Expect the Best!

This is an official publication
of the Cobb County Board of Commissioners.

Sam Olens, *Chairman*

Helen Goreham, *District One*

Bob Ott, *District Two*

Tim Lee, *District Three*

Woody Thompson, *District Four*

David Hankerson, *County Manager*

COBB COUNTY - GEORGIA

Cobb County Water System

www.cobbcounty.org

662 South Cobb Drive, Marietta, GA 30060